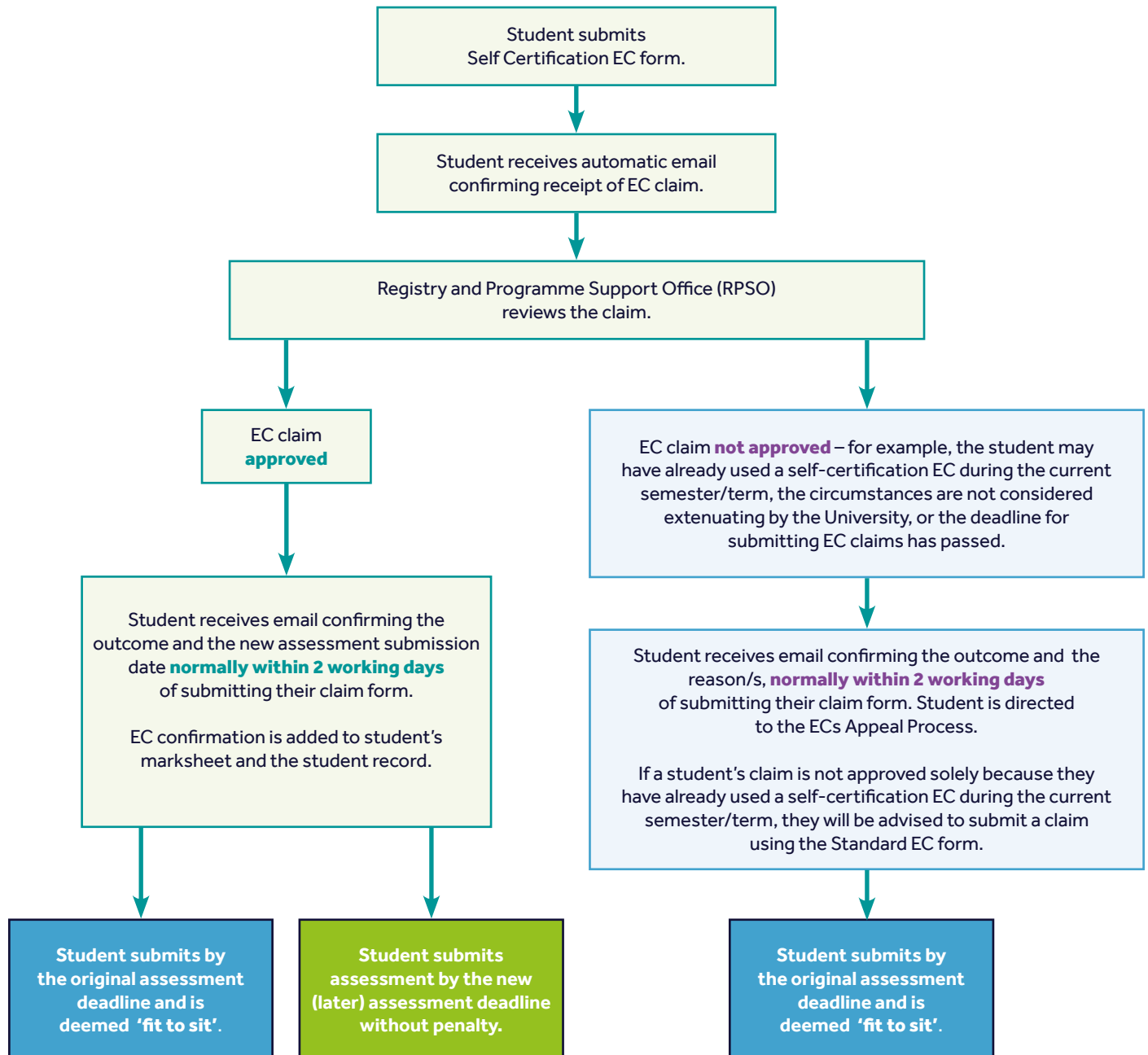


# Self-Certification Extenuating Circumstance (EC) Claim\* Process

\*For circumstances of no more than five working days which include the submission date.



## FURTHER INFORMATION

Extenuating Circumstances Procedure (Section 4 of the Student Regulations Framework)



Student Guide to Extenuating Circumstances (available on the Registry and Programme Support Office page of MyMarjon)



ExtenuatingCircumstances  
@marjon.ac.uk